



PGDM

LOGISTICS MANAGEMENT

at ASM's IMCOST
Integrated with Safeducate

Looking for
100% placements?

then ASM'S IMCOST

PGDM
LOGISTICS MANAGEMENT
Integrated with Safeducate
is for you.

Two years full-time AICTE approved
integrated program with Safeducate

Assured placements opportunities with
the unique ASM EDGE program

100% Placement Assurance

ABOUT ASM

Established in 1983, the Audyogik Shikshan Mandal (ASM) Group of Institutes has completed 36 years in the field of education. Through this period, ASM has persistently provided the corporate world with well prepared professionals. This history of excellence has been validated by the fact that ASM has consistently been ranked amongst the top B-Schools in India.

The faculty of ASM comprises of the best in industry and academia. The faculty members for the course are a rich blend of academicians, industry practitioners teaching faculty and mentors from industry. ASM has excellent industry-institute interaction for more than 3 decades and tie-ups with leading organisations for cutting edge certifications for enhanced skills leading to employability.

ASM boasts of a strong alumni base of 69000+ graduates in leading corporates, who are very closely associated with the institute for placements & industry interfacing.



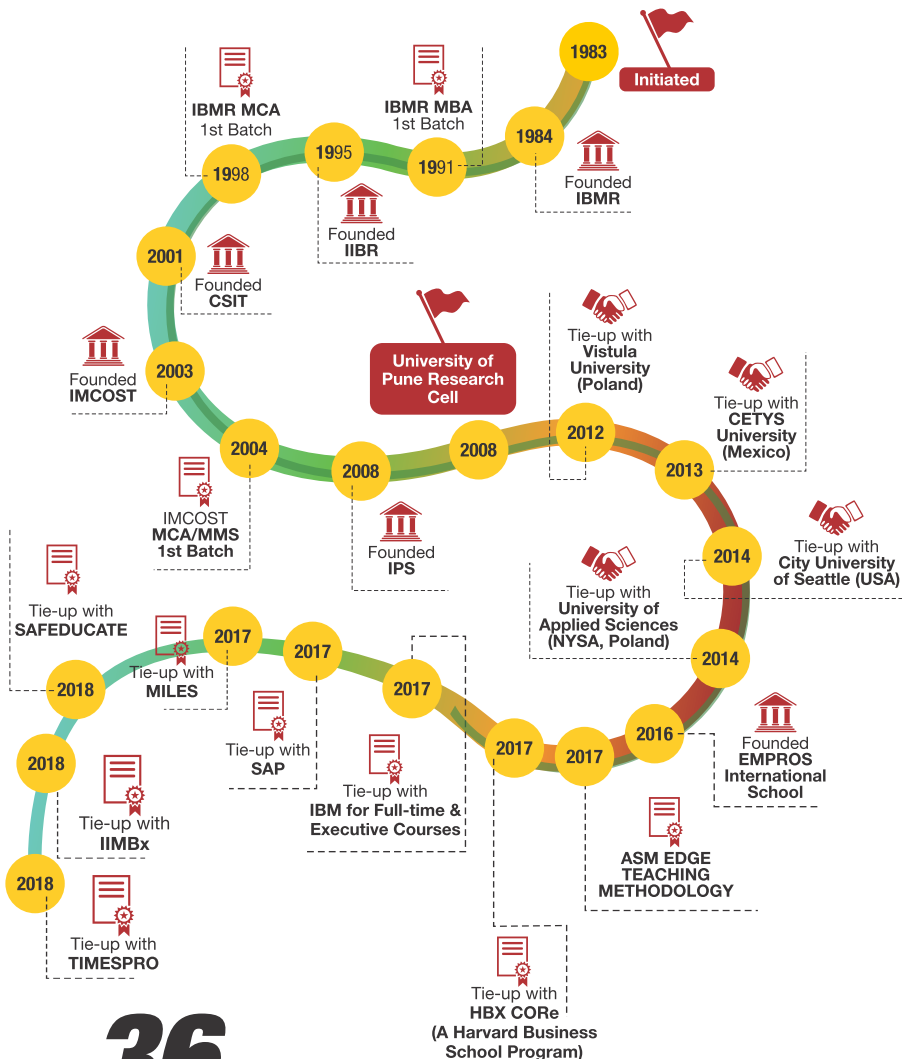
A WINNER OF MANY AWARDS, ASM WAS RECENTLY AWARDED

- 1 "Acadmia and Industry collaborations for Innovative Curriculum to drive Employability"
National Excellence Award 2018
ASSOCHAM India
- 2 "Best Institute for Innovation in Curriculum" at ASMA 2017
by Dr. M. P. Poonia,
Vice Chairman - AICTE
- 3 "Leading Higher Education Group"
by Business Excellence Research Group (BERG)
Singapore

THE WINNING WAY

Ranked amongst the top B-Schools by AIMA, Business Barons, Business Standard, DSI, The Week, Business Chronicle & Silicon India





36
36 YEARS
OF LEADING
THE WAY

THE
ASM
 LEGACY

2 YRS FULL-TIME AICTE APPROVED PGDM - LOGISTICS MANAGEMENT INTEGRATED WITH SAFEDUCATE

ASM's EDGE: Excellence Driven Guaranteed Employability

ASM's EDGE aims to empower and enhance career path by offering credible and beneficial cutting EDGE industry certifications which complements traditional education curriculum. The program modules are co-designed, co-developed, co-delivered and certified by leading organisations like IBM, SAP, leading US-CPA training institute-MILES, delivered in the state-of-the-art IBM analytics and SAP labs on campus.

GLOBAL OUTLOOK: Students have opportunities to study from faculty from across the globe from universities like CityU, Seattle-USA, CETYS University-Mexico, VSFS-Prague, University of Nysa, Poland, and various other universities.

DOMAIN SKILLS AND CUTTING EDGE INTEGRATED INDUSTRY CERTIFICATIONS: ASM students are trained and certified in Business Analytics by IBM, user modules by SAP and domain skills by MILES for US-CPA.

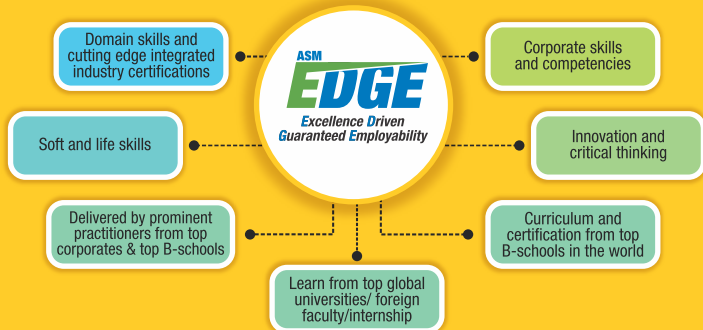
INNOVATION AND CRITICAL THINKING: ASM innovation lab provides programs like SAP I360, Innovation Next and Effective Manager modules to enhance innovative and critical thinking skills.

CURRICULUM AND CERTIFICATIONS FROM TOP B-SCHOOLS IN THE WORLD: The HBX CORe from Harvard Business School Program, the online courses and simulation from Harvard Business Publishing. Harvard Business Publishing's association with the ASM will allow access to the entire range of global and India centric content.

CORPORATE SKILLS AND COMPETENCIES: Interview techniques, industry mentoring, aptitude classes, skill identification test from aspiring minds, industry visits, interaction with global business leader form an integral part of this training to ensure employability in new age careers.

SOFT AND LIFE SKILLS: Psychometric tests, etiquettes, language skills, team building activities are conducted on a regular basis along with presentations, book reviews, management events.

PROGRAM DELIVERED BY PROMINENT PRACTITIONERS FROM TOP CORPORATES AND TOP B-SCHOOLS: Eminent faculty members from institutions like IITs, IIMs, Harvard Business School Alumni, international faculty members from various universities of USA, Mexico, Europe along with prominent practitioners from top industries like IBM, SAP, Deloitte, Accenture, Syntel, HCL, Tata Motors are involved with delivering the program using innovative and experiential pedagogy and state-of-the-art learning management systems..



COURSE DELIVERY PARTNERS



HARVARD BUSINESS PUBLISHING
CASE STUDIES AND ONLINE COURSES

FEW FACULTY AND ADVISORY BOARD MEMBERS



Devender Kumar
Sr. Manager Hr. & Strategy
Patanjali



Kapil Bali
Director
CM Logistics



Romi Kumar
HR-Manager
RCPL



Nishakant Ojha
Principal Advisor
(Information Technology
& Innovations)

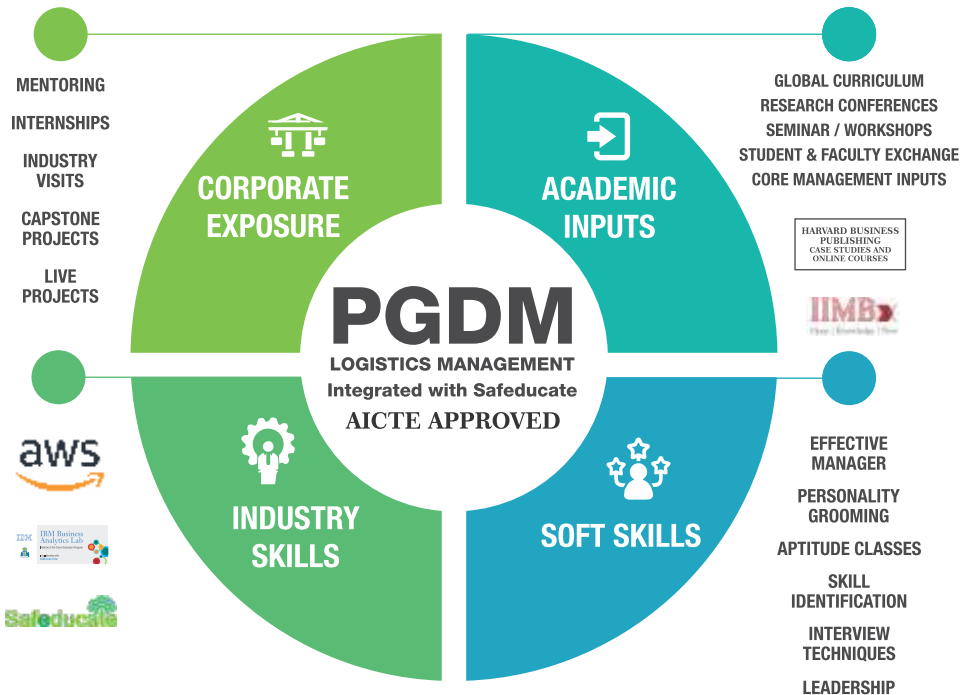


Praven Chauhan
Principal Advisor
VP-HR, Agarwal Packer
& Movers

PGDM

LOGISTICS MANAGEMENT

A 2 year full time Course In Collaboration with Industry & Top Academic Universities



Subject delivery is through the industry experts
& highly qualified teachers

COURSE STRUCTURE

LOGISTICS MANAGEMENT

Two years full-time AICTE approved
integrated program with Safeducate

Trimester 1

- 101 Essential of Business Management
- 102 Global Managerial Business Communication
- 103 Research Methodology & Quantitative Techniques
- 104 Managerial Accounting
- 105 HRM and People and Systems in Organization
- 106 *Basics of Supply Chain Management

Basics of Supply Chain Management

Trimester 2

- 107 IT & Management with Technology
- 108 Marketing Management
- 109 Financial Management
- 110 Management of Business Operations
- 111 * Warehouse Management
- 112 *Logistics Management & Information System

Warehouse Management Logistics Management & Information System

Trimester 3

- 113 *Procurement and Inventory Management
- 114 Entrepreneurship Development & Project Management
- 115 Managerial Economics
- 116 *Strategic and Operational Issues in SCM
- 117 *Implementation of ERP in SCM

Procurement & Inventory Management Strategic & operational issues in SCM Implementation of ERP in SCM

Trimester 4

- 118 *Trends in Supply Chain Management (Workshop)
- 119 Business Environment (Indian and World Economy)
- 120 Laws for Global Business
- 121 Business Strategies
- 122 *Workshop: Indirect Tax & Documentation(Workshop)

Trends in Supply Chain Management (Workshop) Workshop: Indirect Tax & Documentation

Trimester 5 & 6

123/124

**On the Job Training | ** Project | ** Viva-Voice

PROGRAM OBJECTIVE

The objective of this course is to enable students to understand the importance and dynamics of a firm's physical distribution functions and management of its supply chain. Logistics should ensure that the supplier is able to respond to the change in the demand very fast. Entire production should change from a traditional push system to pull system to facilitate a rapid response. Instead of a stocking, the goods and supplying on demand, orders are executed on shipment to shipment basis information Technology plays an important role here as an enabler. It helps management in producing and delivering goods when the consumer needs them. This results in reducing inventory and exposes all operational deficiencies. Now the management resolves these deficiencies and slashes down costs.

ELIGIBILITY & ADMISSION PROCEDURE

Admission to PGDM Institutions shall be made only from the candidates qualified from any one of the six All India tests i.e.; CAT, XAT, CMAT, ATMA, MAT, GMAT or the common entrance examinations (if any) conducted by the respective State Governments

- I. Score in any one of the six All India tests i.e. (CAT, XAT, CMAT, ATMA, MAT, GMAT) or the common entrance examinations (if any) conducted by the respective State Governments. - 35 to 60%
- II. Score for academic performance in X Std., XII Std., Under Graduate Degree/ Post Graduate Degree - 5 to 25%
- III. Group discussion/interview - 20 to 45% .
- VI. Weightage for participation in Sports, Extra-Curricular activities, Academic diversity and Gender diversity – 5 to 20%

POTENTIAL CAREER OPPORTUNITIES IN LOGISTICS MANAGEMENT



ANALYST

Analyst is the most common entry-level logistics position. Analysts are responsible for gathering and analyzing data to look for problems



LOGISTICS ENGINEER

A successful analyst might find himself promoted to Logistics Engineer. The tasks of an engineer are related to those of an analyst engineers evaluate the supply chain and logistics systems for trends or problems using computer systems and mathematics.



CONSULTANT

Consultants work directly with clients devising and implementing logistics solutions for specific problems.



CUSTOMER SERVICE

A client's needs and concerns must be relayed to engineers or managers; likewise, if there is a problem of logistics, the problem and its solution must be communicated to the client. Therefore, a knowledge of logistics offers both clients and customer service representatives a greater grasp of the situation.



PURCHASING MANAGER

Purchasing managers find materials suppliers across the world, sign them to contracts, and manage relationships with them. They must also communicate with inventory and warehouse managers to coordinate the delivery of materials.



INTERNATIONAL LOGISTICS MANAGER

While international logistics managers aren't responsible for acquiring materials, they are responsible for maintaining relationships with international partners. International logistics requires a familiarity with ever-changing international customs, laws, and regulations.



INVENTORY MANAGER

Inventory managers oversee the accumulation of resources and material goods, and examine data for trends.



SUPPLY-CHAIN MANAGER

Supply-chain managers are expected to understand logistics planning in order to forecast long-term financial needs. Again, the ability to communicate, collaborate, and manage is key; if the supply-chain manager recognizes a problem, he must ensure its implementation by many other managers and departments.

Students develop a firm level of understanding of the key functions of business – accounting, finance, management, marketing, management information systems, the global economy, entrepreneurship development, operations management & others.

100% students get engage with the industry to learn about the practical industrial work environment in companies.

A NEVER BEFORE OPPORTUNITY

Assured placements opportunities in organizations like



ASSURED PLACEMENTS OPPORTUNITIES

YOUR CAREER IS WAITING TO TAKE OFF

*Based On Attendance And Performance of Students

WANTED 1.4 MILLION NEW SUPPLY CHAIN WORKERS BY 2018 - FORTUNE

RECENT ALUMNI ARE INCREASINGLY FILLING ROLE IN MARKETING & SALES(20%) AND OPERATIONS & LOGISTICS(13%) - US NEWS BEST JOBS OF 2018

WHY PGDM

LOGISTICS MANAGEMENT
Integrated with Safeducate
at ASM's IMCOST

- 01 Assured paid Internships in the second year leading to 100% job opportunities in global organizations
- 02 The course of PGDM Logistics Management integrated with Safeducate is focused towards giving students actual industry experience ensuring skill developing hands-on training.
- 03 ASM EDGE for holistic development & employability.
- 04 360° degree grooming to meet industry needs & demands
- 05 Course content developed by leading industry experts

ASM STUDENTS HAVE CONSISTENTLY PROVEN TO BE INDUSTRY- READY PROFESSIONAL WITH WELL-ROUNDED ABILITIES



Co-curricular Activities | Interactive Business | Inter-collegiate Competition
Extracurricular Activities | Mentoring & Counselling | Case Studies | Seminars
Industry-interfacing | Study Tours | Presentations | Workshops
Outdoor Team Building Exercise | Inter-collegiate Competitions | Industry Visits

Other PGDM courses available at IMCOST

PGDM Enterprise Management in association with SAP
PGDM International Finance in association with US-CPA
PGDM Digital Marketing in association with TimesPro

FOR ADMISSIONS CONTACT

THANE

Institute of Management
& Computer Studies,
C-4 Wagle Industrial Estate,
Near Mulund (W)
Check Naka, Thane (W) 400604
+91 9372104632

CHINCHWAD

ASM Group of Institutes,
MIDC, Block 'C', Chinchwad,
Pune, Maharashtra 411019
+91 9422009207/09/10/12

KOLKATA

SKP Building, 1st floor, 132 A,
S.P. Mukherjee Road,
Kolkata - 700026
Mr. Dhritiman Chakravorty
+91 98311 73476

BANGALORE

vaishalijawale@asmedu.org
Ms. Vaishali Jawale
+91 9922991756



C-4, Wagle Industrial Estate, Near Mulund Check Naka,
Thane (W), Mumbai - 400604

T: (022) 25832452, 25832463

M: +91 9372104632, 8928222124, 9820816932, 9769088077

E: admission.imcost@asmimcostedu.org | W: www.imcost.edu.in

THE ASM GROUP OF INSTITUTES

IBMR | IIBR | IPS | IMCOST | CSIT | GJC | GEMS | EMPROS